

Global Economics Analyst

Why a Recession Would Likely Be Mild (Hatzius/Struyven)

- Although we do not believe the US economy was in recession in the first half of 2022, we estimate the risk that this will change over the next 12 months at about one in three. And if there is a recession, one might reasonably fear that it will be fairly deep, at least in labor market terms. After all, the US unemployment rate rose by about 2pp even in the two mildest postwar downturns, in 1960-1961 and 2001.
- Nevertheless, we believe that any post-covid US recession would likely be mild, with a limited increase in the unemployment rate of around 1pp. This would be unprecedented in postwar US history, though recessions with similarly limited increases have occurred in other G10 economies, such as Germany and Canada.
- First, we have shown that an unusually high level of job openings dampens the employment effects of a negative output shock. More generally, the combination of excess demand and inelastic supply—not only for labor but also housing and durable goods—suggests that a decline in demand in these markets will have a bigger negative impact on prices than on output.
- Second, even if job growth does slow substantially, the feedback to consumer spending is likely to be weaker than in past cycles. For one thing, if a downturn in hiring coincides with sharply lower headline inflation, the net effect on real disposable income growth could well be positive. Moreover, the strength of private-sector balance sheets should continue to dampen spillovers from any real income weakness into spending.
- Third, even in a recession, we see structural reasons for continued growth in some important areas of the economy. Covid-sensitive sectors such as office-adjacent consumption and tourism still have room to normalize. Meanwhile, both infrastructure investment and climate-related spending are likely to grow, aided in part by long-lasting federal spending programs.
- These considerations mostly carry over to other G10 economies. The caveats are that a full stop to Russian gas deliveries could trigger a severe downturn in Europe, our conclusions and terminal policy rate forecasts would change if inflation proved significantly more entrenched than we anticipate, and the past 2½ years have taught us all not to rule out the risk of “unknown unknowns”.

Jan Hatzius

+1(212)902-0394 | jan.hatzius@gs.com
Goldman Sachs & Co. LLC

Daan Struyven

+1(212)357-4172 | daan.struyven@gs.com
Goldman Sachs & Co. LLC

Yulia Zhestkova

+1(646)446-3905 | yulia.zhestkova@gs.com
Goldman Sachs & Co. LLC

Sid Bhushan

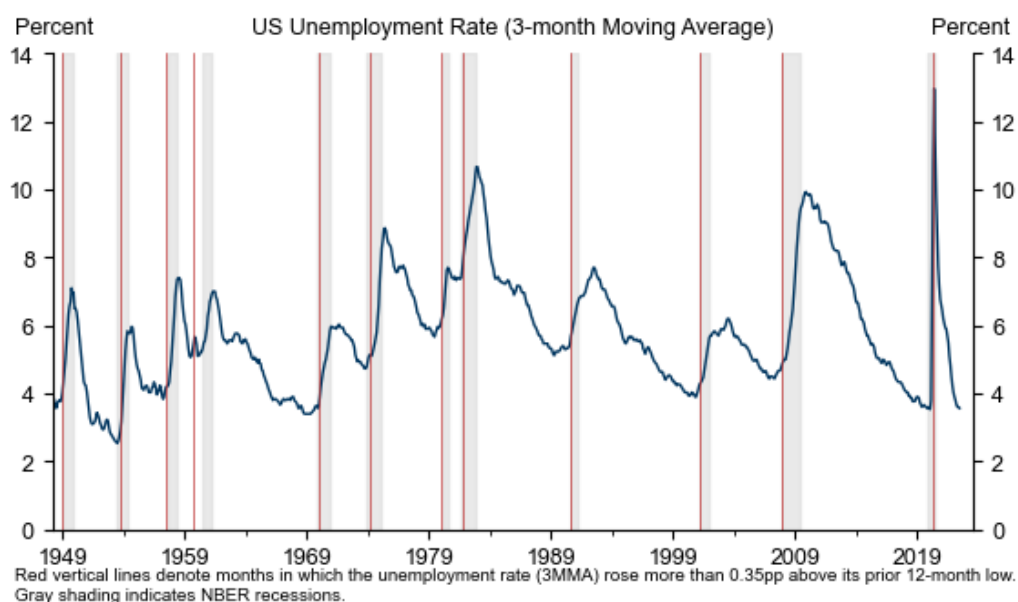
+44(20)7552-3779 | sid.bhushan@gs.com
Goldman Sachs International

Why a Recession Would Likely Be Mild¹

If any confirmation was needed, the strong July employment report showed that the US economy was not in a recession in the first seven months of 2022. However, we estimate the risk that this will change over the next 12 months at about one in three.

And if there is a recession, one might reasonably fear that it will be fairly deep, at least in labor market terms. After all, the US unemployment rate rose by about 3¼pp in the average US postwar recession and by about 2pp even in the two mildest postwar downturns, in 1960-1961 and 2001.² Moreover, our recent review of 77 DM recessions shows that high core inflation and high unit labor cost growth (and both are currently elevated) often precede severe recessions.

Exhibit 1: The US Unemployment Rate Rose by About 2pp Even in the Mildest Postwar Recessions



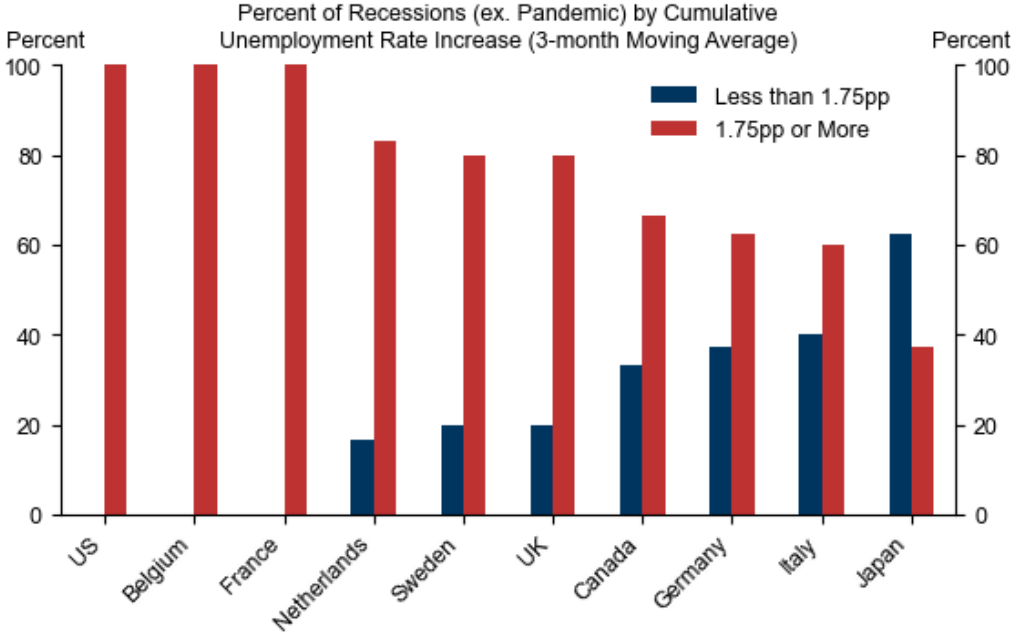
Source: NBER, US Bureau of Labor Statistics, Haver Analytics, Goldman Sachs Global Investment Research

Nevertheless, we see three reasons to believe that any post-covid US recession would likely be mild, with a limited increase in the unemployment rate of around 1pp. This would be unprecedented in postwar US history, though recessions with similarly limited increases have occurred in other G10 economies, such as Germany, Japan, the UK, Italy, and Canada (Exhibit 2).

¹ We thank Giovanni Pierdomenico for his contributions to this note.

² We define the change in the unemployment rate as the difference between the maximum and the minimum of its three-month moving average.

Exhibit 2: Recessions With Limited Increases in the Unemployment Rate Have Occurred in Other G10 Economies



We remove the pandemic recession from the sample because the significant expansion of short-time work schemes sharply limited the rise in the unemployment rate in many European economies and Japan.

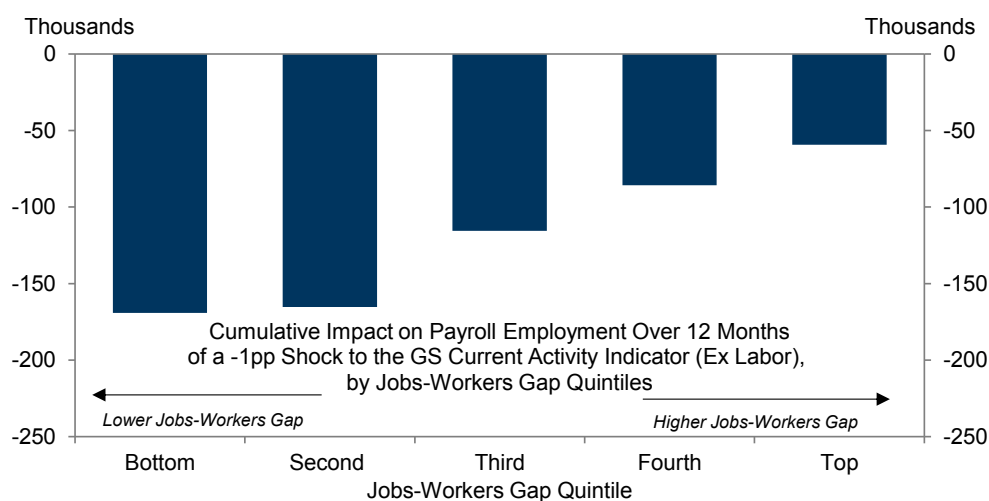
Source: Haver Analytics, Goldman Sachs Global Investment Research

Driver #1: Pent-Up Employment

First, we have recently shown that an unusually high level of job openings dampens the employment effects of a negative output shock.

Exhibit 3 shows our finding that the jobs hit from slower growth is less than half as large as normal when the jobs-workers gap—the difference between the total number of jobs (i.e. employment plus job openings) and the number of workers (i.e. the labor force)—is in the top 20% of its historical range. Although labor shortages should ease somewhat, we expect our US jobs-workers gap—which stands at 4.8 million in July based on our nowcast—to stay tighter than its 2019 peak for the next two years.

Exhibit 3: It Takes Longer for a Slowdown in Activity Growth to Generate a Slowdown in Hiring When Pent-up Demand for Workers Is Elevated

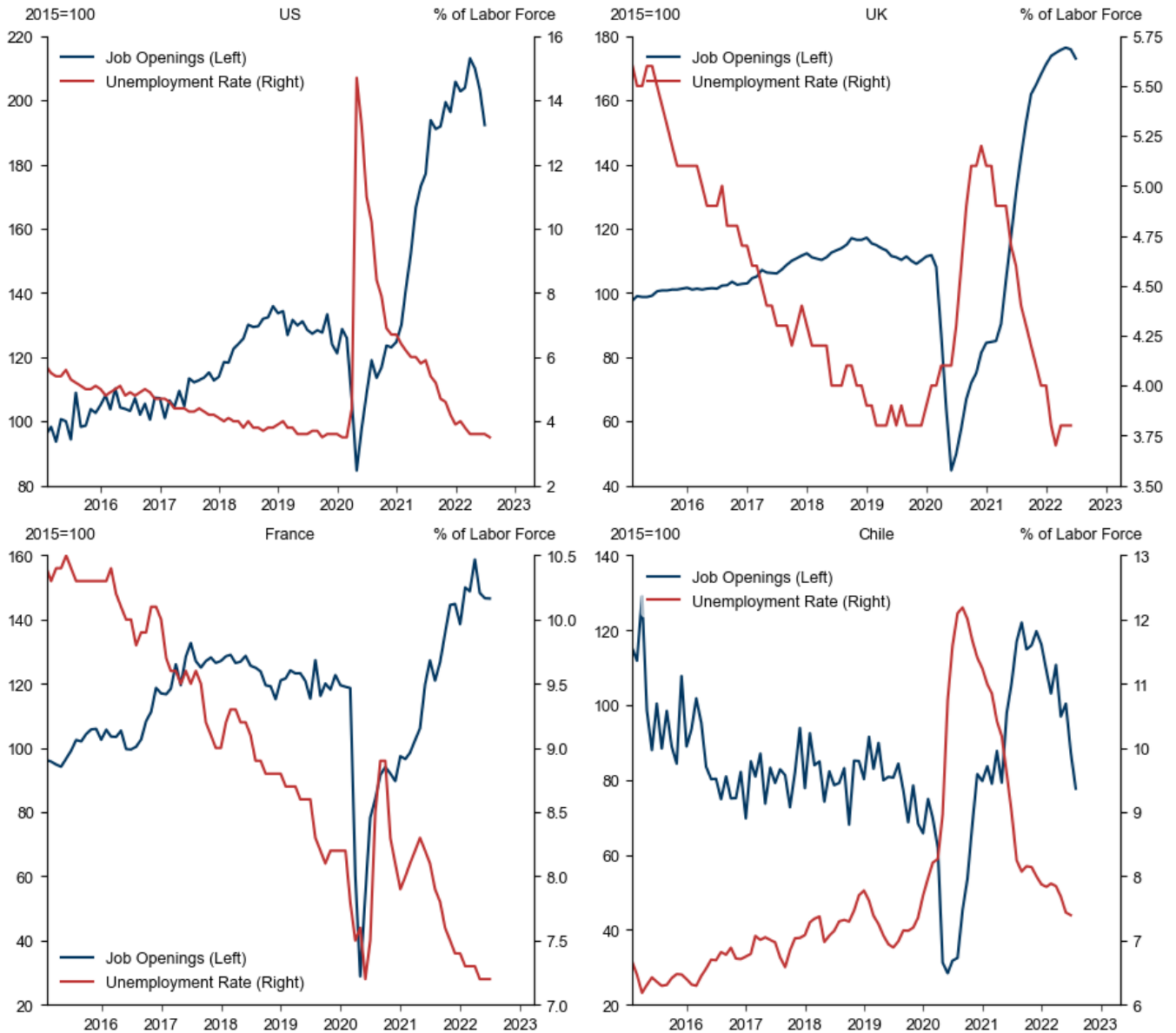


Source: Goldman Sachs Global Investment Research

Cooling wage growth and inflation while avoiding a significant labor market recession likely requires that job openings decline without a corresponding rise in unemployment. While modern US data suggest this is challenging, recent preliminary evidence points to little tradeoff between job openings and unemployment in the very tight post-pandemic labor market. In fact, the US job openings rate has declined by 0.7pp since March while the unemployment rate has actually declined by 0.1pp. Similarly, job openings have declined in France, the UK, and especially Chile (where goods spending also jumped and labor supply weakened sharply following major fiscal easing and pension withdrawals³) without any rise in the unemployment rate (Exhibit 4).

³ Chile and Norway are the only two OECD countries other than the US where real goods spending jumped well above its pre-pandemic trend in 2021.

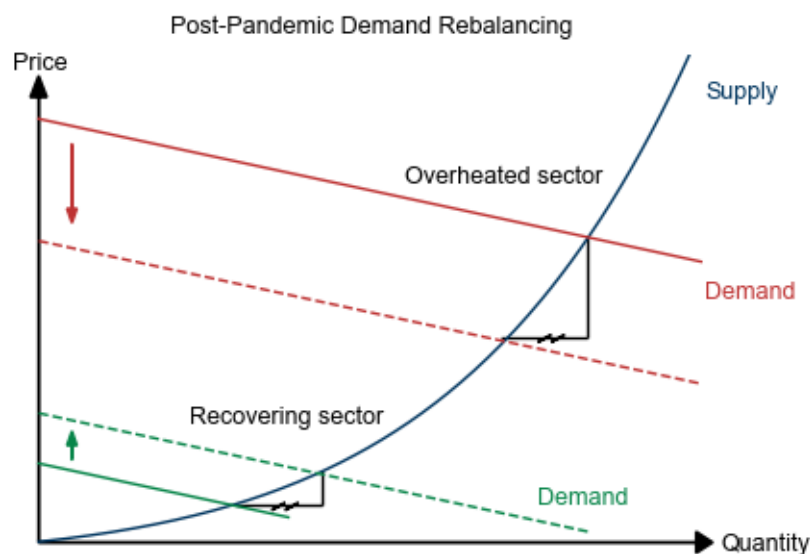
Exhibit 4: A Disproportionately Large Contribution to Labor Demand Softening From Job Openings in the US, France, and Chile



Source: Haver Analytics, Goldman Sachs Global Investment Research

More generally, the combination of excess demand and inelastic supply in overheated markets—not only for labor but also housing and durable goods—suggests that a decline in demand in these markets will have a bigger negative impact on prices than on output (Exhibit 5). On housing, we recently found that supply constraints dampen the hit to existing home sales and especially housing starts from a decline in demand from higher mortgage rates.

Exhibit 5: A Decline in Demand in Overheated Sectors Likely Has a Bigger Negative Impact on Prices Than on Output



Source: Goldman Sachs Global Investment Research

In contrast, a rise in demand in sectors that are still recovering from the pandemic (e.g. office-adjacent activities) likely has a bigger positive impact on output than on prices. The reason is that supply is likely more elastic at low activity levels.⁴ The combination of pandemic demand shifts and a steepening supply curve thus helps explain why inflation surged during the pandemic, and supports our central forecast that inflation will come down sharply next year without a large drop in output.⁵

⁴ Downward price and wage rigidities are one reason why supply tends to be more elastic at low activity levels. See also Veronica Guerrieri, Guido Lorenzoni, Ludwig Straub, and Iván Werning, "Macroeconomic Implications of COVID-19: Can Negative Supply Shocks Cause Demand Shortages?", *American Economic Review*, 2022.

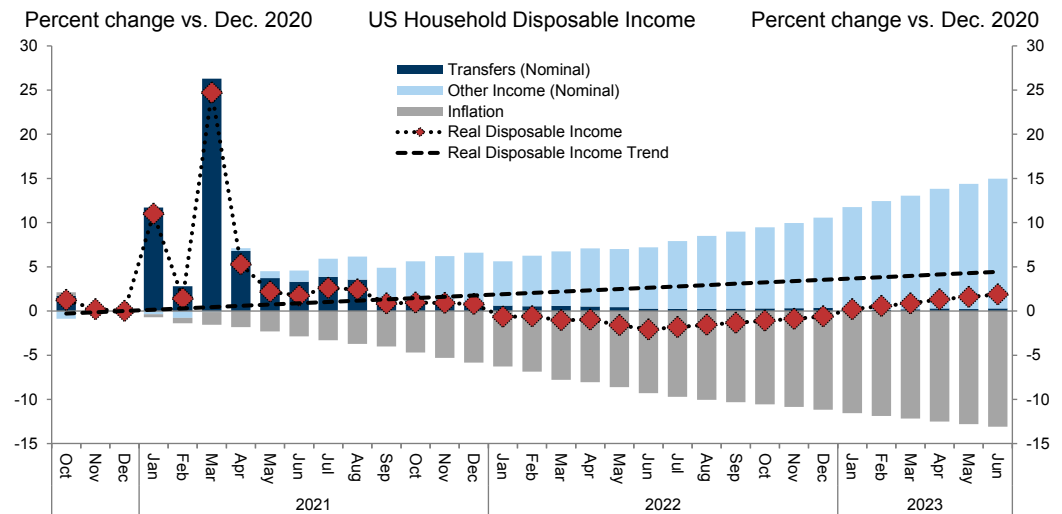
⁵ Shifts in demand curves (e.g. outward due to fiscal easing) and supply curves (e.g. inward due to weakness in the labor force or lockdowns) have also contributed to higher inflation.

Driver #2: Weaker Feedback From Job Slowdown to Spending

Second, even if job growth does slow substantially, the feedback to consumer spending is likely to be weaker than in past cycles.

For one thing, if a downturn in hiring coincides with sharply lower headline inflation, the net effect on real disposable income could well be positive. The roughly 20% decline in gasoline prices over the past two months suggests that headline inflation will slow further. In fact, our central forecast is that real disposable income grows by nearly 6% by end-2023 despite a slowdown in monthly payroll gains to 50k.⁶

Exhibit 6: We Expect Real Income to Pick Up as Headline Inflation Moderates (Despite Slower Job Growth)

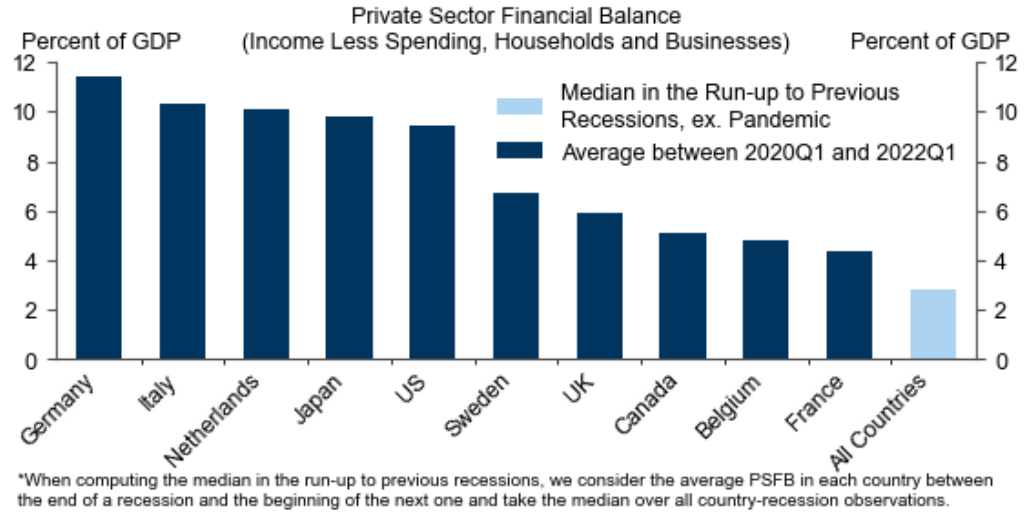


Source: Department of Commerce, Goldman Sachs Global Investment Research

Moreover, the strength of private-sector balance sheets—among households, businesses, and banks—should continue to dampen spillovers from any potential real income weakness into spending. We have shown that large private sector saving surpluses reduce the probability of any recession and often precede a less severe recession if one occurs. Exhibit 7 shows that the US private sector has been running a large saving surplus worth nearly 10% of GDP on average since 2020.

⁶ We also expect a boost to real income growth in 2023 from a normalization in effective tax rates from their elevated 2022 levels.

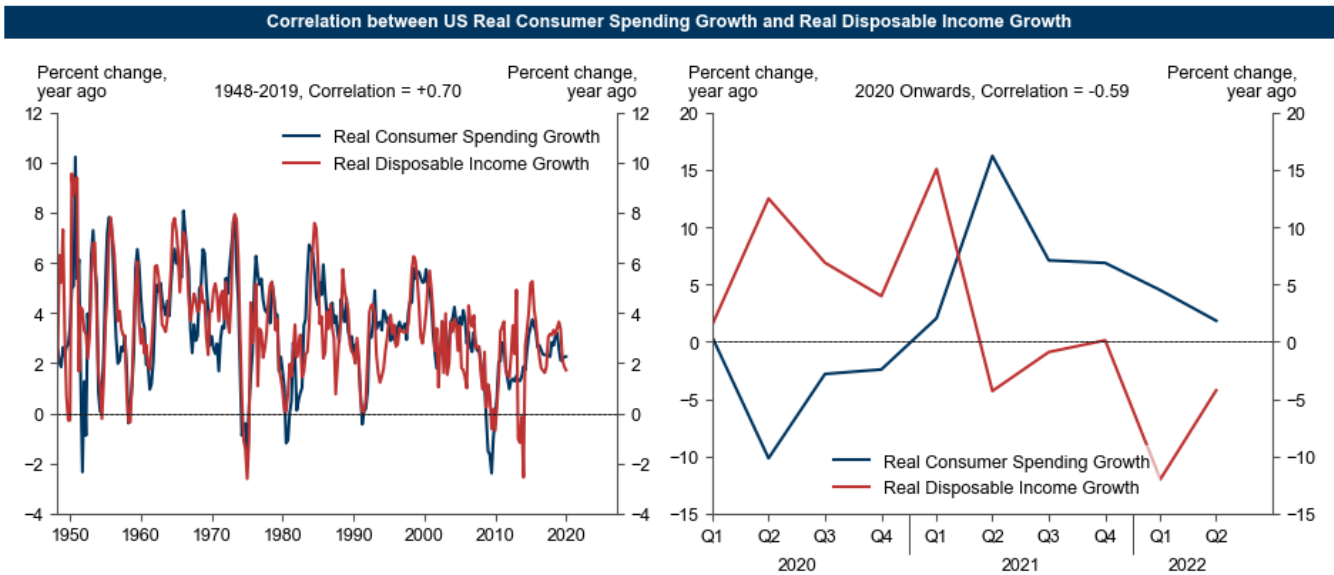
Exhibit 7: The Private Sector Has Accumulated Large Saving Surpluses in this Cycle



Source: Haver Analytics, Goldman Sachs Global Investment Research

To be clear, job growth obviously still matters for spending growth. However, job growth may continue to pale in importance compared with the other forces driving income and spending in this pandemic cycle. These other forces include swings in fiscal transfers and headline inflation on the income side, and the opportunity and willingness to spend on the spending side. Exhibit 8 illustrates that the relationship between real income growth and real spending growth is indeed weaker in this cycle.

Exhibit 8: A Weaker Link Between Income and Spending in this Cycle



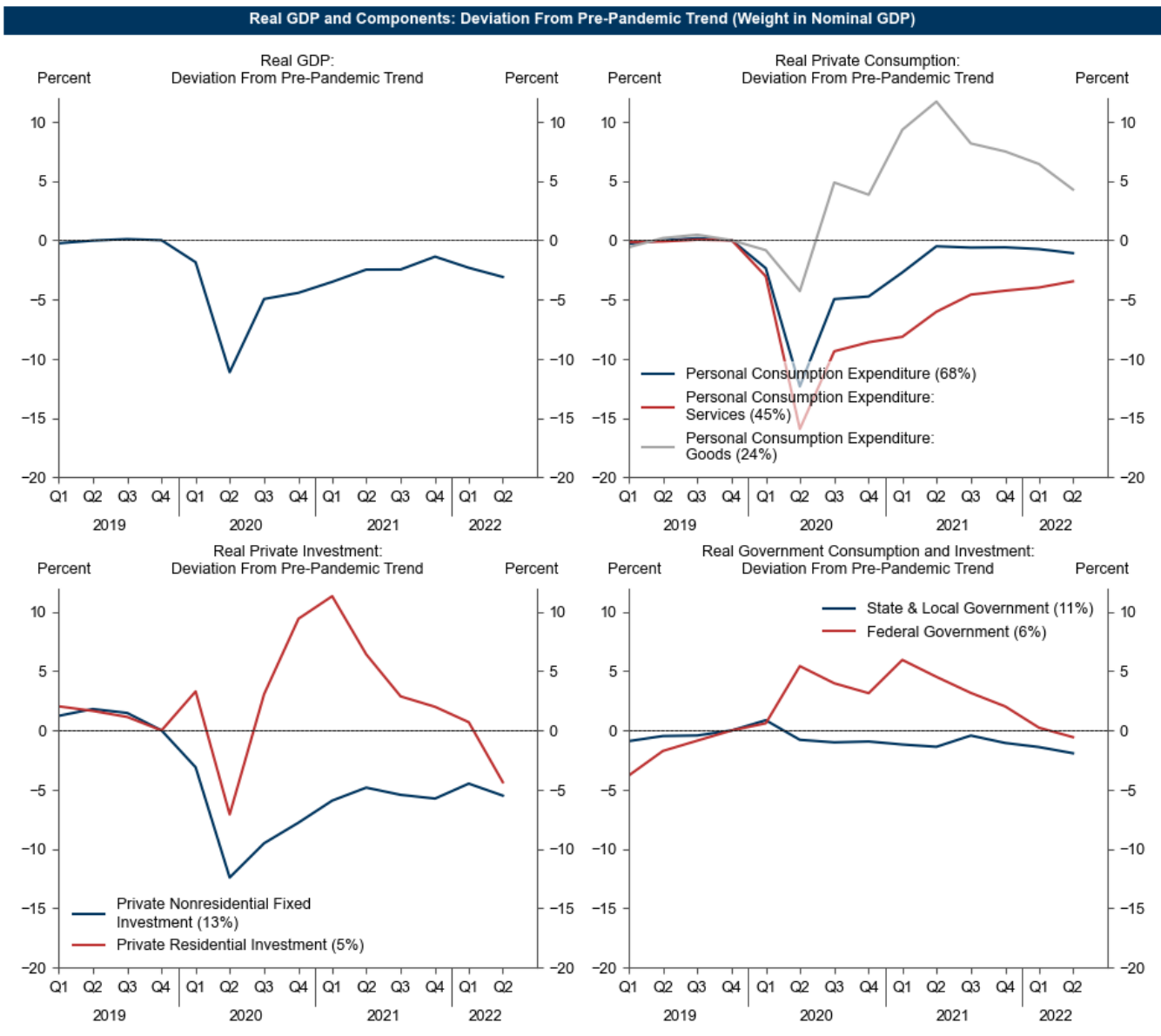
Source: Bureau of Economic Analysis, Haver Analytics, Goldman Sachs

Driver #3: Room for Growth

Third, even in a recession, we see reasons for continued growth in some important areas of the economy related both to the incomplete recovery from the pandemic and longer-run investment programs.

Exhibit 9 shows the gap between real GDP and its counterfactual level had output continued to grow at its pre-pandemic 2012-2019 average pace from 2020Q1 onwards. On this measure, real GDP remains 3% below its pre-pandemic trend in Q2. The deviations from the pre-pandemic trend are the largest for consumer spending on services (-3½%) and private nonresidential fixed investment (-5½%).

Exhibit 9: Softness in Consumer Services Spending and Business Investment...

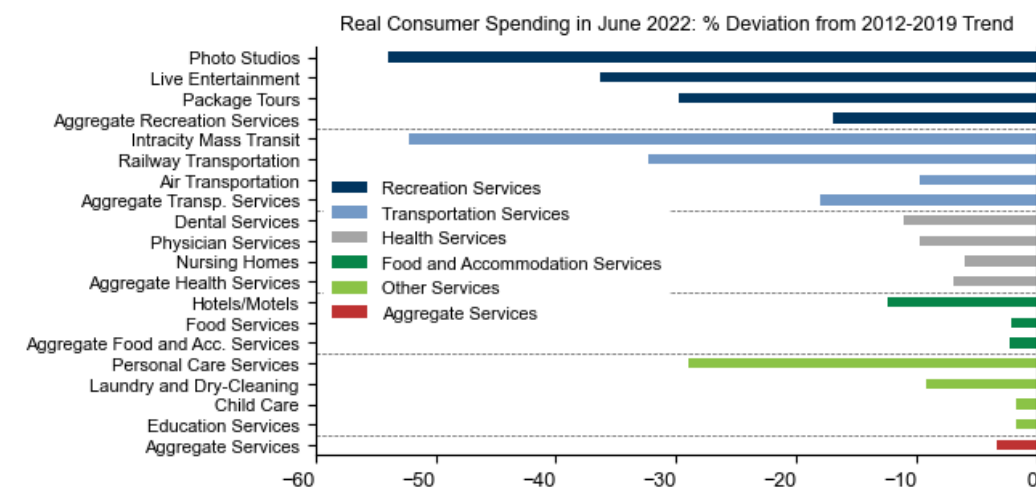


Source: Bureau of Economic Analysis, Haver Analytics, Goldman Sachs Global Investment Research

Exhibit 10 shows that covid-sensitive services sectors still have room to normalize. The key sectors with room to grow are tourism (e.g. package tours, live entertainment, hotels), office-adjacent consumption (e.g. transportation services, laundry and dry

cleaning), and several medical services.

Exhibit 10: ... Particularly in Tourism and Office-Adjacent Activities



Source: Bureau of Economic Analysis, Haver Analytics, Goldman Sachs Global Investment Research

Climate-related spending and infrastructure investment are likely to grow too, aided in part by long-lasting federal spending programs.⁷

The world likely needs incremental annual investments to achieve net zero worth around 1¼% of global GDP. The new Inflation Reduction Act includes \$369bn of energy and climate incentives over the next 10 years to curb US carbon emissions by 40% by 2030. US infrastructure investment has already started to edge up (although it remains low as a share of GDP relative to history and to other advanced economies). Infrastructure investment is set to rise further, aided in part by the bipartisan infrastructure legislation Congress enacted last year (boosting spending by 0.1-0.2% of GDP over the next few years).

Risks of a Deeper US Recession

Risks of a deeper recession would increase if inflation proved more entrenched than we anticipate or the economy were hit by additional negative supply shocks, which could lead the Fed to hike the funds rate far beyond our 3¼-3½% base case.

To assess entrenchment risk, we monitor the underlying core inflation trend, the breadth of wage and price pressures, especially for core services, and business, consumer, and market-based measures of inflation and wage expectations. The key downside supply side risks are potential further disappointments in the labor force participation rate, renewed lockdowns in China, escalation of the war in Ukraine, and a renewed surge in global commodity prices.

Europe Is Different

The private sector has run large saving surpluses and the incomplete recovery leaves

⁷ On the other hand, countercyclical fiscal easing may be more limited in the next recession if inflation is still elevated.

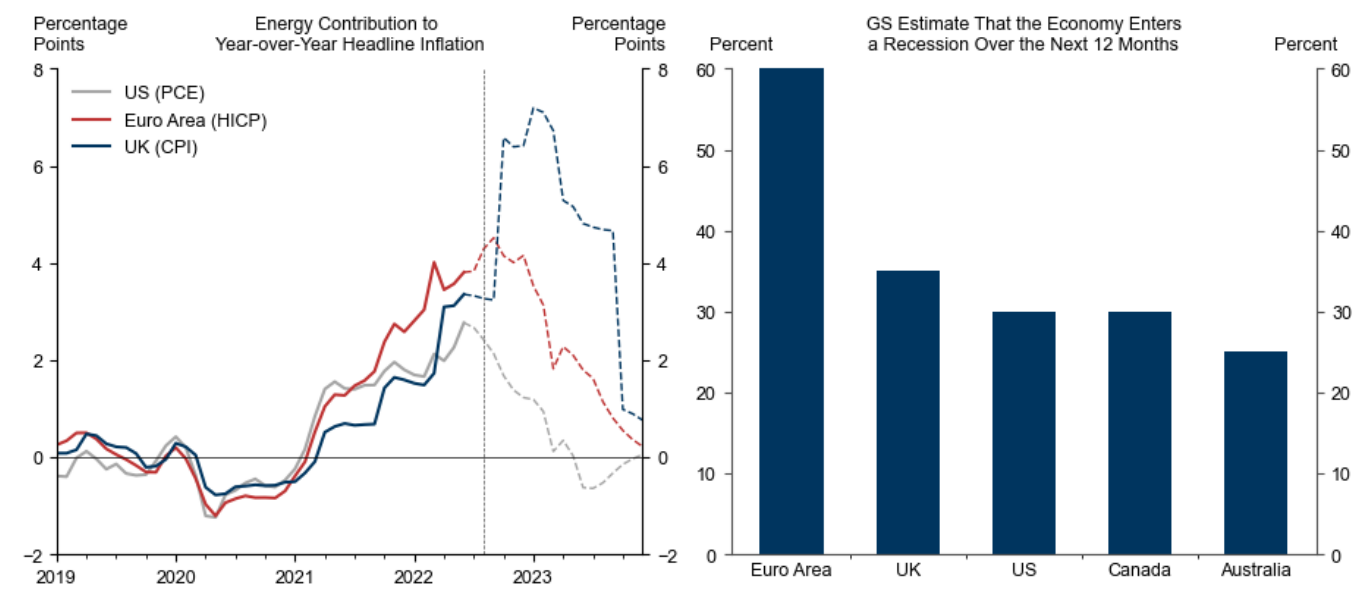
room for growth in services outside the US too (Exhibit 7). Will the next recession therefore likely also be mild in the other G10 economies?

Our current answer is yes for Canada, Australia, and Japan. As in the US, the unusually high level of job openings in Canada and Australia should dampen the employment effects of a negative output shock there too. And later reopening, if anything, implies somewhat more room to grow in face-to-face services in both economies. Finally, most recent recessions have been mild in Japan, and soft wage growth suggests the Japanese economy is not overheated.

The answer is less clear in Europe. Our central forecast is that the Euro area will experience a mild recession, with annualized growth of -0.3% and -0.6% in Q3 and Q4, respectively. On the optimistic side, there is still substantial room for reopening in Southern Europe, and especially Spain. On the pessimistic side, the contribution from energy to inflation is much larger and more back-loaded in the Euro area and especially the UK than in the US (Exhibit 11, left panel). This implies a worse central outlook for real income, consumer spending, and industrial activity in Europe. Similarly, larger gas supply disruptions, energy prices increases, or second-round effects via supply chains and confidence channels could make the Euro area recession deeper than our central case.

The arguments for why the next recession is more likely to be severe in Europe are similar to the arguments for a higher risk of any recession. Consistent with this, our subjective probability that the economy enters a recession in the next 12 months is the highest in the Euro area (60%) and the UK (35%), followed by the US (30%), Canada (30%), and Australia (25%).

Exhibit 11: A Larger Energy Shock in Europe Implies Larger Recession Risks



Source: Haver Analytics, Goldman Sachs Global Investment Research

Jan Hatzius

Daan Struyven

Disclosure Appendix

Reg AC

We, Jan Hatzius, Daan Struyven, Yulia Zhestkova and Sid Bhushan, hereby certify that all of the views expressed in this report accurately reflect our personal views, which have not been influenced by considerations of the firm's business or client relationships.

Unless otherwise stated, the individuals listed on the cover page of this report are analysts in Goldman Sachs' Global Investment Research division.

Disclosures

Regulatory disclosures

Disclosures required by United States laws and regulations

See company-specific regulatory disclosures above for any of the following disclosures required as to companies referred to in this report: manager or co-manager in a pending transaction; 1% or other ownership; compensation for certain services; types of client relationships; managed/co-managed public offerings in prior periods; directorships; for equity securities, market making and/or specialist role. Goldman Sachs trades or may trade as a principal in debt securities (or in related derivatives) of issuers discussed in this report.

The following are additional required disclosures: **Ownership and material conflicts of interest:** Goldman Sachs policy prohibits its analysts, professionals reporting to analysts and members of their households from owning securities of any company in the analyst's area of coverage.

Analyst compensation: Analysts are paid in part based on the profitability of Goldman Sachs, which includes investment banking revenues. **Analyst as officer or director:** Goldman Sachs policy generally prohibits its analysts, persons reporting to analysts or members of their households from serving as an officer, director or advisor of any company in the analyst's area of coverage. **Non-U.S. Analysts:** Non-U.S. analysts may not be associated persons of Goldman Sachs & Co. LLC and therefore may not be subject to FINRA Rule 2241 or FINRA Rule 2242 restrictions on communications with subject company, public appearances and trading securities held by the analysts.

Additional disclosures required under the laws and regulations of jurisdictions other than the United States

The following disclosures are those required by the jurisdiction indicated, except to the extent already made above pursuant to United States laws and regulations. **Australia:** Goldman Sachs Australia Pty Ltd and its affiliates are not authorised deposit-taking institutions (as that term is defined in the Banking Act 1959 (Cth)) in Australia and do not provide banking services, nor carry on a banking business, in Australia. This research, and any access to it, is intended only for "wholesale clients" within the meaning of the Australian Corporations Act, unless otherwise agreed by Goldman Sachs. In producing research reports, members of the Global Investment Research Division of Goldman Sachs Australia may attend site visits and other meetings hosted by the companies and other entities which are the subject of its research reports. In some instances the costs of such site visits or meetings may be met in part or in whole by the issuers concerned if Goldman Sachs Australia considers it is appropriate and reasonable in the specific circumstances relating to the site visit or meeting. To the extent that the contents of this document contains any financial product advice, it is general advice only and has been prepared by Goldman Sachs without taking into account a client's objectives, financial situation or needs. A client should, before acting on any such advice, consider the appropriateness of the advice having regard to the client's own objectives, financial situation and needs. A copy of certain Goldman Sachs Australia and New Zealand disclosure of interests and a copy of Goldman Sachs' Australia Sell-Side Research Independence Policy Statement are available at: <https://www.goldmansachs.com/disclosures/australia-new-zealand/index.html>. **Brazil:** Disclosure information in relation to CVM Resolution n. 20 is available at <https://www.gs.com/worldwide/brazil/area/gir/index.html>. Where applicable, the Brazil-registered analyst primarily responsible for the content of this research report, as defined in Article 20 of CVM Resolution n. 20, is the first author named at the beginning of this report, unless indicated otherwise at the end of the text. **Canada:** This information is being provided to you for information purposes only and is not, and under no circumstances should be construed as, an advertisement, offering or solicitation by Goldman Sachs & Co. LLC for purchasers of securities in Canada to trade in any Canadian security. Goldman Sachs & Co. LLC is not registered as a dealer in any jurisdiction in Canada under applicable Canadian securities laws and generally is not permitted to trade in Canadian securities and may be prohibited from selling certain securities and products in certain jurisdictions in Canada. If you wish to trade in any Canadian securities or other products in Canada please contact Goldman Sachs Canada Inc., an affiliate of The Goldman Sachs Group Inc., or another registered Canadian dealer. **Hong Kong:** Further information on the securities of covered companies referred to in this research may be obtained on request from Goldman Sachs (Asia) L.L.C. **India:** Further information on the subject company or companies referred to in this research may be obtained from Goldman Sachs (India) Securities Private Limited, Research Analyst - SEBI Registration Number INH000001493, 951-A, Rational House, Appasaheb Marathe Marg, Prabhadevi, Mumbai 400 025, India, Corporate Identity Number U74140MH2006FTC160634, Phone +91 22 6616 9000, Fax +91 22 6616 9001. Goldman Sachs may beneficially own 1% or more of the securities (as such term is defined in clause 2 (h) the Indian Securities Contracts (Regulation) Act, 1956) of the subject company or companies referred to in this research report. **Japan:** See below. **Korea:** This research, and any access to it, is intended only for "professional investors" within the meaning of the Financial Services and Capital Markets Act, unless otherwise agreed by Goldman Sachs. Further information on the subject company or companies referred to in this research may be obtained from Goldman Sachs (Asia) L.L.C., Seoul Branch. **New Zealand:** Goldman Sachs New Zealand Limited and its affiliates are neither "registered banks" nor "deposit takers" (as defined in the Reserve Bank of New Zealand Act 1989) in New Zealand. This research, and any access to it, is intended for "wholesale clients" (as defined in the Financial Advisers Act 2008) unless otherwise agreed by Goldman Sachs. A copy of certain Goldman Sachs Australia and New Zealand disclosure of interests is available at: <https://www.goldmansachs.com/disclosures/australia-new-zealand/index.html>. **Russia:** Research reports distributed in the Russian Federation are not advertising as defined in the Russian legislation, but are information and analysis not having product promotion as their main purpose and do not provide appraisal within the meaning of the Russian legislation on appraisal activity. Research reports do not constitute a personalized investment recommendation as defined in Russian laws and regulations, are not addressed to a specific client, and are prepared without analyzing the financial circumstances, investment profiles or risk profiles of clients. Goldman Sachs assumes no responsibility for any investment decisions that may be taken by a client or any other person based on this research report. **Singapore:** Goldman Sachs (Singapore) Pte. (Company Number: 198602165W), which is regulated by the Monetary Authority of Singapore, accepts legal responsibility for this research, and should be contacted with respect to any matters arising from, or in connection with, this research. **Taiwan:** This material is for reference only and must not be reprinted without permission. Investors should carefully consider their own investment risk. Investment results are the responsibility of the individual investor. **United Kingdom:** Persons who would be categorized as retail clients in the United Kingdom, as such term is defined in the rules of the Financial Conduct Authority, should read this research in conjunction with prior Goldman Sachs research on the covered companies referred to herein and should refer to the risk warnings that have been sent to them by Goldman Sachs International. A copy of these risks warnings, and a glossary of certain financial terms used in this report, are available from Goldman Sachs International on request.

European Union and United Kingdom: Disclosure information in relation to Article 6 (2) of the European Commission Delegated Regulation (EU) (2016/958) supplementing Regulation (EU) No 596/2014 of the European Parliament and of the Council (including as that Delegated Regulation is implemented into United Kingdom domestic law and regulation following the United Kingdom's departure from the European Union and the European Economic Area) with regard to regulatory technical standards for the technical arrangements for objective presentation of investment recommendations or other information recommending or suggesting an investment strategy and for disclosure of particular interests or indications of

conflicts of interest is available at <https://www.gs.com/disclosures/europeanpolicy.html> which states the European Policy for Managing Conflicts of Interest in Connection with Investment Research.

Japan: Goldman Sachs Japan Co., Ltd. is a Financial Instrument Dealer registered with the Kanto Financial Bureau under registration number Kinsho 69, and a member of Japan Securities Dealers Association, Financial Futures Association of Japan and Type II Financial Instruments Firms Association. Sales and purchase of equities are subject to commission pre-determined with clients plus consumption tax. See company-specific disclosures as to any applicable disclosures required by Japanese stock exchanges, the Japanese Securities Dealers Association or the Japanese Securities Finance Company.

Global product; distributing entities

The Global Investment Research Division of Goldman Sachs produces and distributes research products for clients of Goldman Sachs on a global basis. Analysts based in Goldman Sachs offices around the world produce research on industries and companies, and research on macroeconomics, currencies, commodities and portfolio strategy. This research is disseminated in Australia by Goldman Sachs Australia Pty Ltd (ABN 21 006 797 897); in Brazil by Goldman Sachs do Brasil Corretora de Títulos e Valores Mobiliários S.A.; Public Communication Channel Goldman Sachs Brazil: 0800 727 5764 and / or contatogoldmanbrasil@gs.com. Available Weekdays (except holidays), from 9am to 6pm. Canal de Comunicação com o Público Goldman Sachs Brasil: 0800 727 5764 e/ou contatogoldmanbrasil@gs.com. Horário de funcionamento: segunda-feira à sexta-feira (exceto feriados), das 9h às 18h; in Canada by Goldman Sachs & Co. LLC; in Hong Kong by Goldman Sachs (Asia) L.L.C.; in India by Goldman Sachs (India) Securities Private Ltd.; in Japan by Goldman Sachs Japan Co., Ltd.; in the Republic of Korea by Goldman Sachs (Asia) L.L.C., Seoul Branch; in New Zealand by Goldman Sachs New Zealand Limited; in Russia by OOO Goldman Sachs; in Singapore by Goldman Sachs (Singapore) Pte. (Company Number: 198602165W); and in the United States of America by Goldman Sachs & Co. LLC. Goldman Sachs International has approved this research in connection with its distribution in the United Kingdom.

Effective from the date of the United Kingdom's departure from the European Union and the European Economic Area ("Brexit Day") the following information with respect to distributing entities will apply:

Goldman Sachs International ("GSI"), authorised by the Prudential Regulation Authority ("PRA") and regulated by the Financial Conduct Authority ("FCA") and the PRA, has approved this research in connection with its distribution in the United Kingdom.

European Economic Area: GSI, authorised by the PRA and regulated by the FCA and the PRA, disseminates research in the following jurisdictions within the European Economic Area: the Grand Duchy of Luxembourg, Italy, the Kingdom of Belgium, the Kingdom of Denmark, the Kingdom of Norway, the Republic of Finland, the Republic of Cyprus and the Republic of Ireland; GS - Succursale de Paris (Paris branch) which, from Brexit Day, will be authorised by the French Autorité de contrôle prudentiel et de résolution ("ACPR") and regulated by the Autorité de contrôle prudentiel et de résolution and the Autorité des marchés financiers ("AMF") disseminates research in France; GSI - Sucursal en España (Madrid branch) authorized in Spain by the Comisión Nacional del Mercado de Valores disseminates research in the Kingdom of Spain; GSI - Sweden Bankfilial (Stockholm branch) is authorized by the SFSa as a "third country branch" in accordance with Chapter 4, Section 4 of the Swedish Securities and Market Act (Sw. lag (2007:528) om värdepappersmarknaden) disseminates research in the Kingdom of Sweden; Goldman Sachs Bank Europe SE ("GSBE") is a credit institution incorporated in Germany and, within the Single Supervisory Mechanism, subject to direct prudential supervision by the European Central Bank and in other respects supervised by German Federal Financial Supervisory Authority (Bundesanstalt für Finanzdienstleistungsaufsicht, BaFin) and Deutsche Bundesbank and disseminates research in the Federal Republic of Germany and those jurisdictions within the European Economic Area where GSI is not authorised to disseminate research and additionally, GSBE, Copenhagen Branch filial af GSBE, Tyskland, supervised by the Danish Financial Authority disseminates research in the Kingdom of Denmark; GSBE - Sucursal en España (Madrid branch) subject (to a limited extent) to local supervision by the Bank of Spain disseminates research in the Kingdom of Spain; GSBE - Succursale Italia (Milan branch) to the relevant applicable extent, subject to local supervision by the Bank of Italy (Banca d'Italia) and the Italian Companies and Exchange Commission (Commissione Nazionale per le Società e la Borsa "Consob") disseminates research in Italy; GSBE - Succursale de Paris (Paris branch), supervised by the AMF and by the ACPR disseminates research in France; and GSBE - Sweden Bankfilial (Stockholm branch), to a limited extent, subject to local supervision by the Swedish Financial Supervisory Authority (Finansinspektionen) disseminates research in the Kingdom of Sweden.

General disclosures

This research is for our clients only. Other than disclosures relating to Goldman Sachs, this research is based on current public information that we consider reliable, but we do not represent it is accurate or complete, and it should not be relied on as such. The information, opinions, estimates and forecasts contained herein are as of the date hereof and are subject to change without prior notification. We seek to update our research as appropriate, but various regulations may prevent us from doing so. Other than certain industry reports published on a periodic basis, the large majority of reports are published at irregular intervals as appropriate in the analyst's judgment.

Goldman Sachs conducts a global full-service, integrated investment banking, investment management, and brokerage business. We have investment banking and other business relationships with a substantial percentage of the companies covered by our Global Investment Research Division. Goldman Sachs & Co. LLC, the United States broker dealer, is a member of SIPC (<https://www.sipc.org>).

Our salespeople, traders, and other professionals may provide oral or written market commentary or trading strategies to our clients and principal trading desks that reflect opinions that are contrary to the opinions expressed in this research. Our asset management area, principal trading desks and investing businesses may make investment decisions that are inconsistent with the recommendations or views expressed in this research.

We and our affiliates, officers, directors, and employees, will from time to time have long or short positions in, act as principal in, and buy or sell, the securities or derivatives, if any, referred to in this research, unless otherwise prohibited by regulation or Goldman Sachs policy.

The views attributed to third party presenters at Goldman Sachs arranged conferences, including individuals from other parts of Goldman Sachs, do not necessarily reflect those of Global Investment Research and are not an official view of Goldman Sachs.

Any third party referenced herein, including any salespeople, traders and other professionals or members of their household, may have positions in the products mentioned that are inconsistent with the views expressed by analysts named in this report.

This research is focused on investment themes across markets, industries and sectors. It does not attempt to distinguish between the prospects or performance of, or provide analysis of, individual companies within an industry or sector we describe.

Any trading recommendation in this research relating to an equity or credit security or securities within an industry or sector is reflective of the investment theme being discussed and is not a recommendation of any such security in isolation.

This research is not an offer to sell or the solicitation of an offer to buy any security in any jurisdiction where such an offer or solicitation would be illegal. It does not constitute a personal recommendation or take into account the particular investment objectives, financial situations, or needs of individual clients. Clients should consider whether any advice or recommendation in this research is suitable for their particular circumstances and, if appropriate, seek professional advice, including tax advice. The price and value of investments referred to in this research and the income from them may fluctuate. Past performance is not a guide to future performance, future returns are not guaranteed, and a loss of original capital may occur. Fluctuations in exchange rates could have adverse effects on the value or price of, or income derived from, certain investments.

Certain transactions, including those involving futures, options, and other derivatives, give rise to substantial risk and are not suitable for all investors. Investors should review current options and futures disclosure documents which are available from Goldman Sachs sales representatives or at <https://www.theocc.com/about/publications/character-risks.jsp> and https://www.fiadocumentation.org/fia/regulatory-disclosures_1/fia-uniform-futures-and-options-on-futures-risk-disclosures-booklet-pdf-version-2018. Transaction costs may be significant in option strategies calling for multiple purchase and sales of options such as spreads. Supporting documentation will be supplied upon request.

Differing Levels of Service provided by Global Investment Research: The level and types of services provided to you by the Global Investment Research division of GS may vary as compared to that provided to internal and other external clients of GS, depending on various factors including your individual preferences as to the frequency and manner of receiving communication, your risk profile and investment focus and perspective (e.g., marketwide, sector specific, long term, short term), the size and scope of your overall client relationship with GS, and legal and regulatory constraints. As an example, certain clients may request to receive notifications when research on specific securities is published, and certain clients may request that specific data underlying analysts' fundamental analysis available on our internal client websites be delivered to them electronically through data feeds or otherwise. No change to an analyst's fundamental research views (e.g., ratings, price targets, or material changes to earnings estimates for equity securities), will be communicated to any client prior to inclusion of such information in a research report broadly disseminated through electronic publication to our internal client websites or through other means, as necessary, to all clients who are entitled to receive such reports.

All research reports are disseminated and available to all clients simultaneously through electronic publication to our internal client websites. Not all research content is redistributed to our clients or available to third-party aggregators, nor is Goldman Sachs responsible for the redistribution of our research by third party aggregators. For research, models or other data related to one or more securities, markets or asset classes (including related services) that may be available to you, please contact your GS representative or go to <https://research.gs.com>.

Disclosure information is also available at <https://www.gs.com/research/hedge.html> or from Research Compliance, 200 West Street, New York, NY 10282.

© 2022 Goldman Sachs.

No part of this material may be (i) copied, photocopied or duplicated in any form by any means or (ii) redistributed without the prior written consent of The Goldman Sachs Group, Inc.